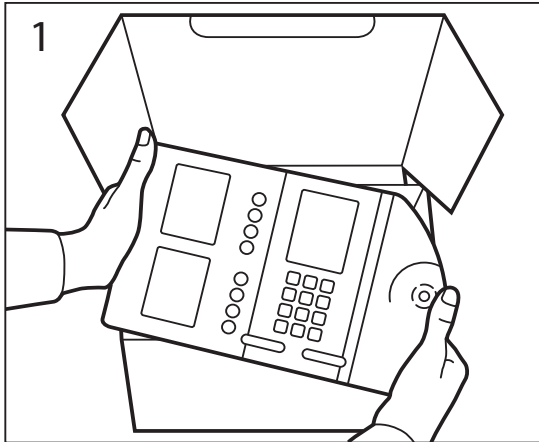




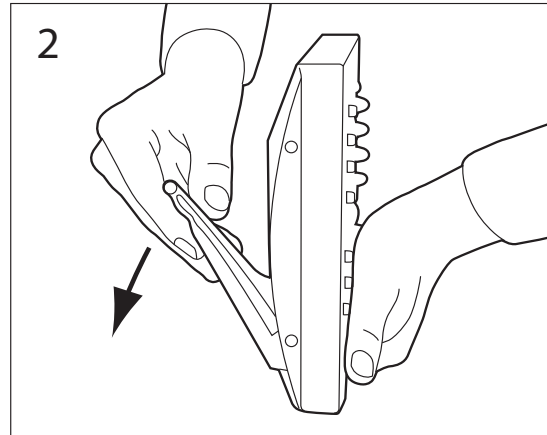
# Speakerbus iD808 Stand Instructions

Speakerbus

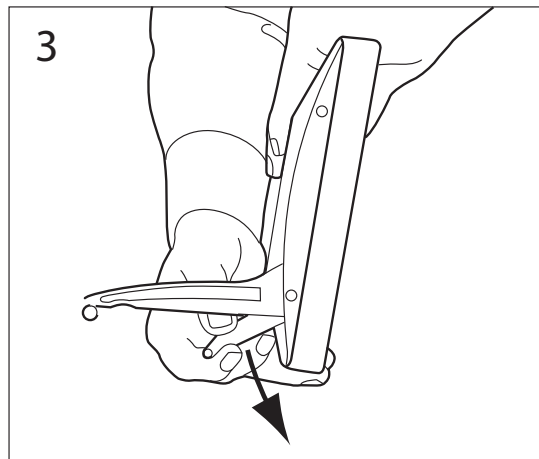
## Extending Legs



Take item out of box.

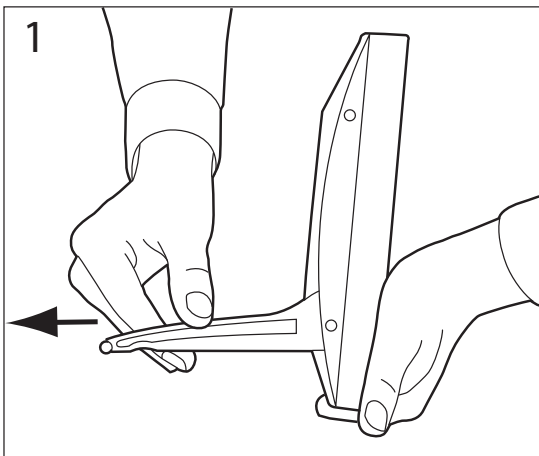


Un-fold legs to desired position. Ensure both legs are adjusted to the same height.

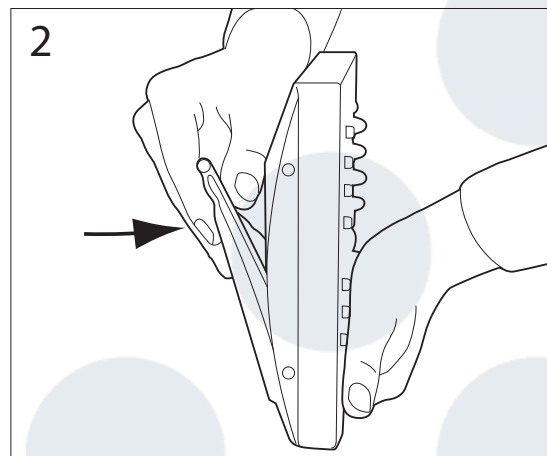


Please follow this step if you require the unit to be positioned behind a keyboard. Un-click leg lifters behind leg, and un-fold them until they click in latch. Ensure both leg lifters are adjusted to the same height.

## Collapsing Legs



Pull leg outwards until it un-locks.



Collapse leg to folded position.